

Hotel Information Sheet

Hyatt Place
I-40 at Germantown Parkway
7905 Giacosa Place
Memphis, Tennessee 38133
Phone: 901-371-0010
Fax: 901-371-9988



When making your reservation, please inform the reservationist that you have a corporate rate with ACA/ACVP

The ACA/ACVP has a corporate rate of \$109.00 plus tax at the **Hyatt Place**.

You will be responsible for your own reservations and charges. If you would like to make your reservations on-line, go to www.hyattplacememphiswolfchasegalleria.com and enter the booking code 31742 in the "Group/Corporate #" box. If you have any difficulty, please contact Kaleen Bennett, Director of Sales, Hyatt Place, 901-371-0010 or Terri Wade, CE Coordinator, ACA office at 800-828-5933

The Hyatt Place is located on the outskirts of Memphis, in Cordova, and is adjacent to the Wolfchase Galleria Mall, one of the largest malls in Memphis, a great location for shopping and dining with over 100 restaurants.

A Taxi from the airport to the hotel in the Wolfchase area will charge approximately \$55.00 - \$65.00. It is recommended that you rent a car at the airport and take advantage of this great location.

Each guestroom has a signature Hyatt Grand bed™, a 42" flat panel high-definition plasma TV, a Cozy Corner oversized sofa/sleeper that is separated from the sleeping area, and complimentary high-speed Wi-Fi internet access throughout the hotel and a computer room is located in the lobby. Rooms also include a refrigerator, coffee maker, iron and ironing board, a hairdryer and complimentary newspaper, Monday-Friday.

A complimentary hot breakfast, including eggs and bacon is served daily. You may also purchase signature hot breakfast entrees with Starbucks® specialty coffees.

The Hyatt also offers a complimentary Stay Fit® fitness center and is equipped with state-of-the-art Life Fitness® cardio and strength equipment that lets you watch your TV programming while exercising.

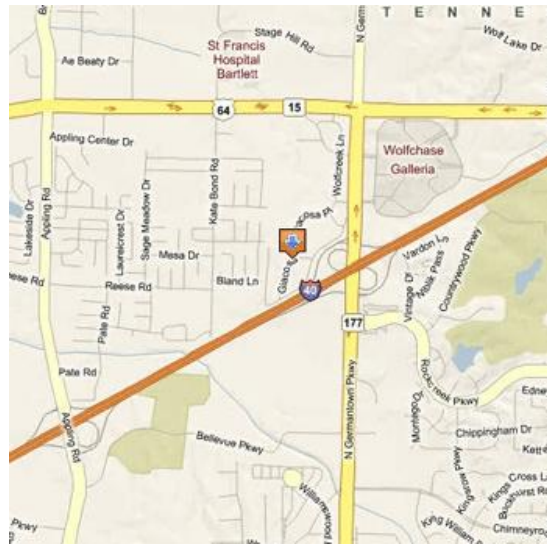
Attractions

- **Tunica Casinos**
- **Hunt Phelan Home**
- **Mud Island**
- **Beale Street**
- **Memphis Motorsports Park**
- **Graceland**
- **IMAX Theatre**
- **Memphis Zoo and Aquarium**
- **Pink Palace Museum**
- **Wolfchase Galleria**
- **VF Factory Outlet Mall**
- **National Civil Rights Museum**
- **Brooks Art Gallery**
- **Stax Museum**
- **Sun Studios**
- **Rock and Soul Museum**
- **Fed Ex Forum**
- **Children's Museum**

Restaurants

- **On the Border**
- **Chili's**
- **Macaroni Grill**
- **Joe's Crab Shack**
- **J Alexander**
- **Bonefish Grill**
- **Firebirds**
- **T.G.I Friday's**
- **Abuelos Mexican Restaurant**
- **Bahama Breeze**
- **Red Lobster**
- **Logans Steakhouse**
- **Coltons Steakhouse**
- **Texas Roadhouse**
- **Hooters**
- **Hunans**
- **Quiznos**
- **Steak and Shake**

Driving Directions



Directions from Memphis International Airport:

Exit Memphis International Airport following signs "to I-240"
When you reach the interstate (approximately 1 mile) follow I-240 East
Take I-240 East and continue past the Walnut Grove Road Exit to I-40 East (to Nashville)
Exit I-40 onto Exit 16 North (Germantown Parkway). Stay in the left lane of the exit ramp to continue left/north on Germantown Parkway
Make a left onto Giacosa Place (1st signal)
Hotel is located in Wolfchase Commons

Directions from downtown Memphis:

Take I-240 West to I-40 East (to Nashville)
Exit I-40 onto Exit 16 North (Germantown Parkway). Stay in the left lane of the exit ramp to continue left/north on Germantown Parkway
Make a left onto Giacosa Place. (1st signal)
Hotel is located in Wolfchase Commons

Directions from Hyatt Place to the ACA Resource Center:

Turn left at the light (north on Germantown Parkway) to Highway 64
Turn left (west) on Highway 64
Proceed through five traffic lights
Turn left on Summer Oaks Drive, which is the first left past the light at Kirby Whitten Road
The **ACA Research & Education Resource Center** will be on your left. If you reach a stop sign, you have gone too far.

American College of Apothecaries

2830 Summer Oaks Drive
Memphis, TN 38134
Phone: 901.383.8119
Fax: 901.383.8882

Updated: 10/2009